



JEONJU UNIVERSITY

BACHELOR OF INTERNATIONAL HOSPITALITY

OPEN FOR 2024 & 2025

Jeonju University is a private Christian University, located in the charming city of Jeonju, South Korea. An institution renowned for its commitment to providing quality education in a region known for its rich cultural heritage, Jeonju is most famous for its Hanok Village, a well-preserved historic district that showcases traditional Korean architecture, making it a popular destination for tourists and a symbol of the city's cultural significance.

Studying in South Korea opens a multitude of advantages and opportunities

Studying in Korea offers numerous advantages, notably its rich K-cultural background encompassing phenomena like K-pop and K-drama. South Korea's rapid development has propelled Seoul into one of the world's most advanced cities. Despite prior restrictions on foreign visas, South Korea now hosts a substantial expatriate community, drawn by the country's alluring cultural allure globally. Previously, while visiting Korea was accessible, residing there posed challenges. However, recent changes have facilitated an easier stay for foreigners. Among Korea's cultural gems, is Jeonju, a city steeped in tradition, preserving South Korea's cultural essence through its architecture and cuisine.

Benefits of Studying in South Korea

- **Work Permit Flexibility** - Holders of a student visa in Korea can engage in part-time work up to 30hrs per week, enabling practical experience alongside studies.
- **Global Work Visa Access** - Gain the opportunity to work in prestigious hotels worldwide, broadening your professional horizons.
- **Cost-Effectiveness** - Enjoy the advantage of tuition fees and living costs ensuring an affordable educational experience.
- **Exclusive Scholarships** - TREDU students benefit from a special 20% tuition fee discount, a testament to our commitment to supporting your educational journey.

About TREDU

TREDU is an educational and immigrant consulting agency, we provide a wide range of services, including settlement services. Established in 2017, and recognized by New Zealand Education, we specialize in guiding students through educational opportunities in New Zealand while also introducing them to the vibrant Korean market. Our mission is to provide a holistic educational experience, offering insights and pathway for students to explore opportunities both locally and internationally. At TREDU, your education becomes a gateway to global perspectives and diverse career prospects.

At TREDU, your education becomes a gateway to global perspectives and diverse career prospects!

Inquiry : Reach out to TREDU

Application Completion

Supporting Documents

Offer Acceptance

Fee payment

Begin Your Study Journey!



Aeri Yoon - Director of TREDU

Where Can I Study? And Am I Eligible?



Jeonju University is presenting an invitation to potential students who are interested in studying in South Korea. To be eligible to apply for the study program, you will need to have graduated a high school or relevant level outside of South Korea, and have a passion for hospitality. The program that the eligible student will be studying in is a Bachelor of International Hospitality. This is a four year program, however, if the applicant has already completed a diploma or above level qualification in the relevant field, they will be eligible to only study for 2 years from 3rd level.

Bachelor of International Hospitality

Duration	4 years (full-time)
Requirements	High School graduation or equivalent
Intake	March 2024

About the program

Discover the high demand for skilled hospitality professionals in the Asia Pacific Region!

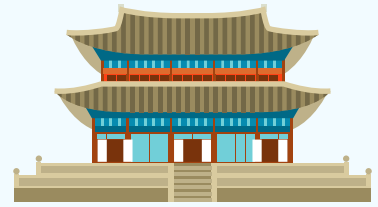
Our program at Jeonju University cultivates competitive skills sought after by luxury hotel brands, preparing future leaders for a bright career in the evolving global hospitality industry.



Where is Jeonju?

Jeonju holds the prestigious UNESCO title as a Creative City for Gastronomy, celebrating its rich culinary heritage. Beyond this accolade, the city is beloved for its iconic Hanok Village, a beautifully preserved historical district showcasing traditional Korean architecture. Additionally, Jeonju is celebrated for its vibrant and diverse K-food culture, offering a delightful array of culinary experiences to visitors and locals alike.

Jeonju University is a private Christian University, located in the charming city of Jeonju, South Korea, is an institution renowned for its commitment to providing quality education in a region known for its rich cultural heritage.



How Can I Work?

Holding a student visa in Korea allows you to engage in *part-time work for up to 30 hours per week*.

In addition, Jeonju University offers work opportunities during your studies. Once connected with a workplace, you can potentially continue working there **post-graduation with a work visa**, extending your professional journey beyond studies.

There are the list hotels you will be able to work at in Korea :

- JW Marriot Seoul
- JW Marriot DDM
- Marriot Pangyo
- Marriot Namdaemun
- Kensington Hotel and Resort
- Gucci Korea
- Mondrian Itaewon
- Sofitel Ambassador Jamsil
- Park Hyatt Seoul
- Busan Hyatt



Will I be able to afford this?

That's correct! Holding a student visa in Korea allows you **to engage in part-time work for up to 30 hours per week**. The **minimum wage for 2024 in Korea is set at 9,860 WON per hour**, providing students with opportunities to work and support themselves financially during their studies.

Fee type	Per Semester	Overall (Yearly)
Tuition	4,013,500 WON > 3,210,800 WON (approx. NZ \$3,960)	8,027,000 WON > 6,421,600 WON (approx. NZ \$7,920)
Accommodation	-	3,073,500 WON (approx. NZ \$3,800)
Insurance	45,000 WON (approx. NZ \$55)	90,000 WON (approx. NZ \$110)
Application fee	-	80,000 WON (approx. NZ \$98)
		9,665,100 WON (NZ \$11,995)

*The above price is denoted in KRW (Korean WON), you might need to convert the KRW amount to your currency for accurate destination. Utilize a reliable currency converter or financial tool with current exchange rates to convert the KRW amount to its approximate equivalent in your currency.

Requirements

- Who have graduated from a high school or relevant level outside of South Korea
- OR who have already completed a diploma or above degree in the relevant field.

Scholarships

- Benefit from our cost-effective tuition fees, which are lower than many other institutions.
- Enjoy reduced tuition fees and **exclusive the 20% off tuition fees**

Accommodation

The estimated annual cost for JJU Dormitory accommodation, inclusive of utilities and internet, is **approximately NZ \$3,800 per year**.

Global Careers

The program prepares you for a promising career with leading brands, offering avenues for professional growth and success.



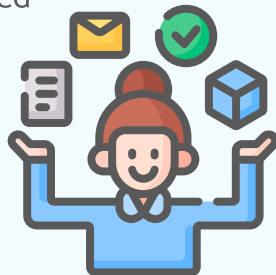
Why study with JJU?



- Bachelor of International Hospitality at Jeonju University is **taught 100% in English**.
- After graduating with the program, BA or MA, you will be **able to legally work in the hospitality sector in Korea**.
- You will have access to our deep connections with the top hotels in Korea. **JJU will help you get the job you want!**
- There is some flexibility with our courses to help you improve your work life balance.

Skills and competencies acquired

1. **Cutting-Edge Expertise:** Acquire in-depth knowledge of international hospitality management trends and standards, staying at the forefront of industry developments.
2. **Leadership Proficiency:** Develop leadership skills tailored for the modern hospitality environment, empowering you to lead teams effectively.
3. **Innovative Mindset:** Cultivate a practical and innovative mindset to navigate and manage current global challenges within the hospitality industry.
4. **Professionalism and Service Excellence:** Foster professionalism and service-oriented attitudes essential for success within the luxury hospitality sector, ensuring an exceptional guest experience.



Exclusive Scholarships



JJU offers an exclusive scholarship for Tredu students, **providing a 20% reduction in tuition fees**. Take advantage of this opportunity to pursue your academic goals with greater affordability.

JJU Facilities

The facilities at JJU are meticulously designed to elevate the academic journey and cater to the multifaceted needs of students. The diverse range of amenities is tailored to foster an optimal learning environment, ensuring that students have access to resources and spaces conducive to their academic, social, and personal growth.

Central Square



General Reference Room



Sky Garden



Small Theater



Lobby



Dormitory - 2 Person Room



“

Begin your transformative educational journey with Tredunz, where we provide comprehensive support, guidance, and resources to shape your academic pursuits and lead you towards a future of boundless opportunities and growth!



About JJU



Tredunz Facebook



Tredunz Instagram

Tredunz

www.tredunz.com

CONTACT INFO

✉ info@tredunz.co.nz

☎ +64 9 941 4170

+64 21 227 7662 / +82 10 5826 5183

🏠 Level 2, 59 High Street, Auckland CBD 1010, New Zealand
Suite 705, 381 Gangnam-daero, Seocho-gu, Seoul, Korea